

# RSVP Message Handler Procedure Description

Chul Kim  
Guest Researcher ANTD

E-mail : [goldfe@nownuri.net](mailto:goldfe@nownuri.net)

Alternative: [chulkim@antd.nist.gov](mailto:chulkim@antd.nist.gov)

Created Date: 2002-08-15

Last Update: 2002-08-19(2003-01-22 )

Current State: Draft

Blank

## Contents

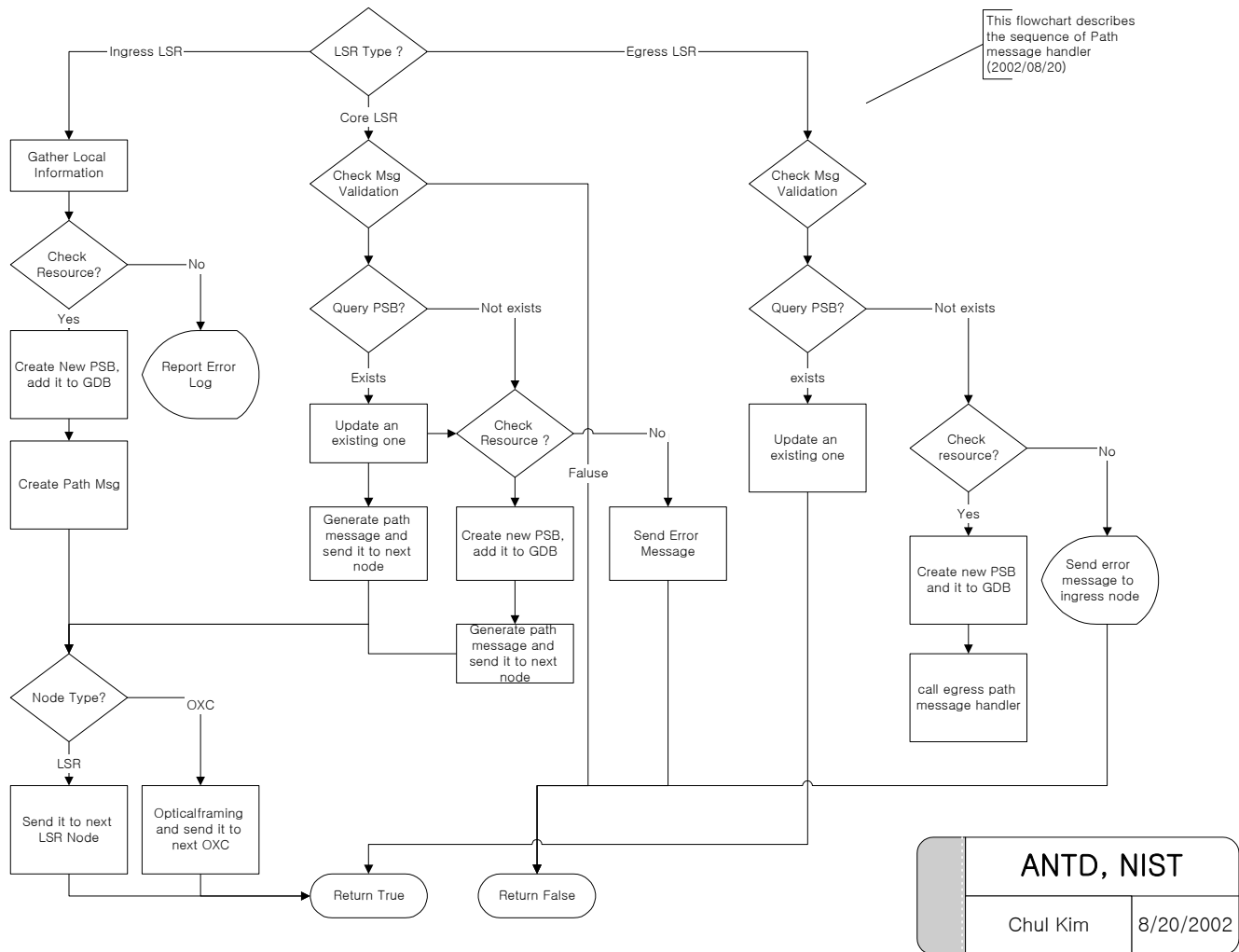
1. RSVP Message handler Description .....	4
1.1 Path Message Handler.....	4
1.2 Resv Message Handler.....	5

# 1. RSVP Message handler Description

Each RSVP message must be properly handled by each RSVP protocol module according to node's position and node type. This document describes the RSVP Message handler of each LSR.

## 1.1 Path Message Handler

Agent module invokes the startup procedure of each Ingress LSR that is specified by Each LSP setup information. This startup procedure plays Ingress' role of overall LSP setup procedure. \_\_ shows the Path Message handler flowchart. This flowchart presents the detail procedure that each node performs.

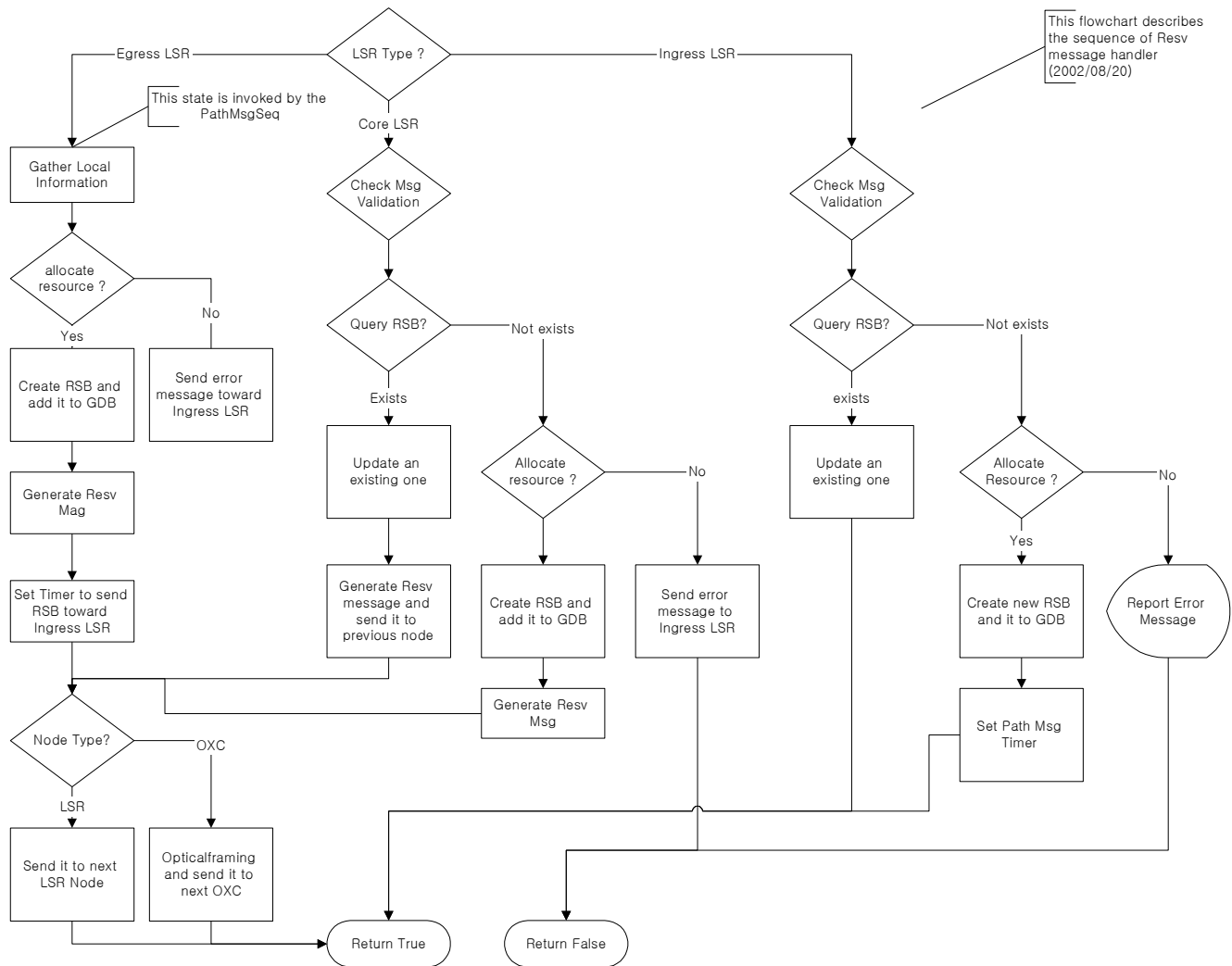


**Fig. 1 Path Message handler flowchart**

Each LSR checks the validation of received Path message and queries exiting one in Generic Database(GDB). If there is no previously received one, RSVP module creates new Resv State Block(RSB) and adds it to GDB for querying. Then, check the resource for allocation. If it is success generate new Path message and send it to next node. If current network resource does not accommodate the request resource then report error message.

## 1.2 Resv Message Handler

Reservation procedure is invoked at egress LSR by receiving Path message. The main role of Resv sequence is allocating network resource. The following shows the sequences of each LSR.



**Fig. 2 Resv Message Handler Flowchart**

The main role of Resv message handler is to check every Resv message, create new Resv message and allocate/reserve network resource.